



HOSTELLERIE
AM SCHWARZSEE
★★★★

Seminar documentation



The Hostellerie am Schwarzsee provides some of the best conferences and seminar support services in the region. Thanks to our modern facilities and multimedia equipments, you and your conference participants will enjoy a productive, inspiring stay, while excellent health and wellness opportunities await you, directly on site. Indeed, one of the most unusual assets we possess is the ability to offer you a productive work environment, in an exquisite, refreshing and natural setting. Away from the hustle and bustle of noisy places, fresh ideas, new inventions and quiet, thoughtful decisions come forth with ease.

Our restaurant facilities can provide for your guests, in any number, and whatever their tastes. During the summer season, your team and business associates can enjoy the view and an excellent meal outside, on our superb outdoor terrace.

Please contact us to share your expectations, or your technical requirements. We can provide technical support, and all the standard audio-visual equipment to ensure your seminar's full success.

Seminar package

Package for 1 day and 1 overnight accommodation at the price of
CHF 225.00 per person in the single room

CHF 200.00 per person in the double room

(Not including visitor's tax CHF 3.10 per person/night)

- Accommodation in generous apartments
- Rich buffet breakfast
- Free use of the indoor swimming pool and wellness area
- 1 plenary room & 1 break out area (from 07.00 to 20.00 h)
- Welcome drink at the arriving
- 2 coffee breaks (coffee, tea, orange juice, snack)
- 1 business lunch (2 course)
- 1 dinner (4 course)
- Mineral water & coffee during the meals
- Mineral water & 1 basket of fruits in the main room
- 1 overhead projector, 1 canvas, 2 flipcharts
- WIFI
- Copy service

Day Package

Seminar with lunch – without overnight accommodation, at the price of

CHF 78.00 per person

CHF 45.00 per person for 1 additional dinner (4 courses)

- 1 plenary room & 1 break out area (from 07.00 to 20.00 h)
- Welcome drink at the arriving
- 2 coffee breaks (coffee, tea, orange juice, snack)
- 1 business lunch (2 course)
- Mineral water & coffee during the lunch
- Mineral water in main room
- 1 overhead projector, 1 canvas, 2 flipcharts
- WIFI
- Copy service

Your individual seminar

Eating, drinking and relaxing

We will gladly organize your personal seminar, prepare you a punctual "Znüni" or "Zvieri" and board you over noon.

Permit your guests sufficient recovery and an appropriate lunch time. We will spoil you with good meals and short waiting periods.

When desired, we can prepare you different menu suggestions. Of course you can arrange your food sequence also to your own taste.

Price list

Fax (at the reception)	depending on expenditure
Photocopies & printing	CHF 0.50 per sheet
Mineral water in the conference room	CHF 8.00 per liter
Coffee-trace	CHF 9.00 per person
Lunch (2 traces)	CHF 25.00 per person
Diner (4 traces)	CHF 45.00 per person
Beamer	CHF 100.00 per day
Group area	CHF 145.00 per day
Conference room	CHF 270.00 per day

For further technical equipment we ask you to inquire us individually!

Unsere Räume und die technische Ausstattung

Conference rooms and technical equipment

Our 5 different conference rooms

Markus Brügger – hall	(110m ²)
Spitzfluh – hall	(110m ²)
Riggisalp – hall	(78m ²)
Schwyberg – hall	(57m ²)
Schopfenspitz – hall	(46m ²)

Technical equipment in all of our conference rooms

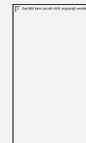
overhead projector

canvas

flipchart

white board

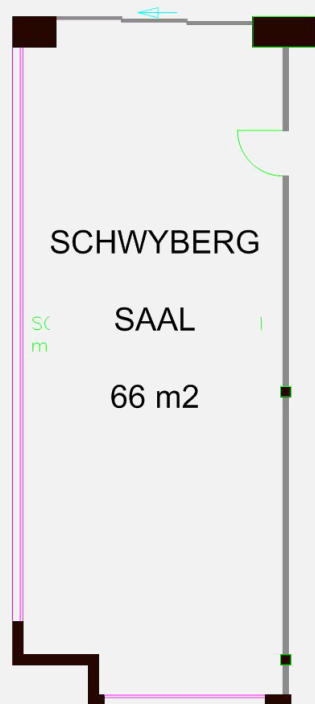
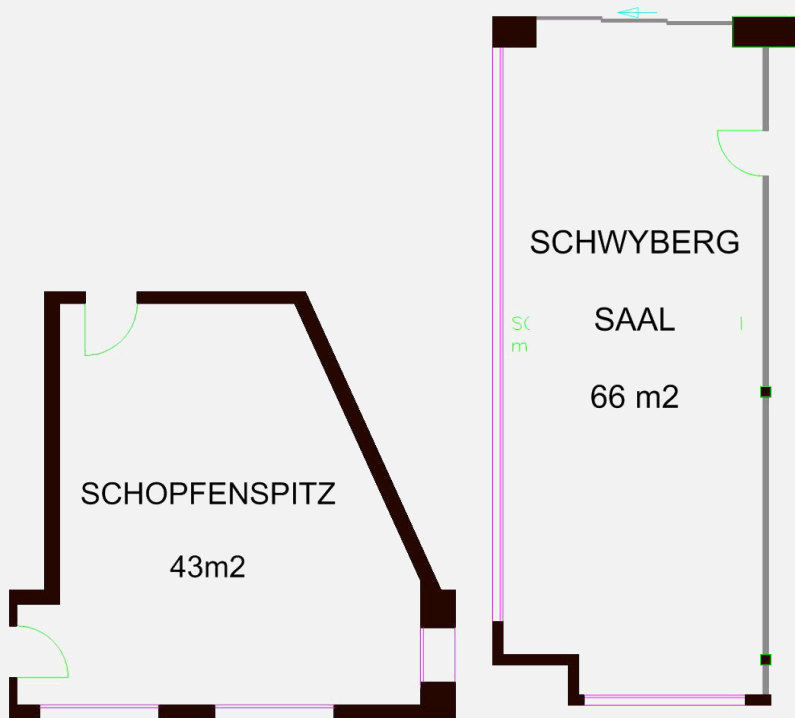
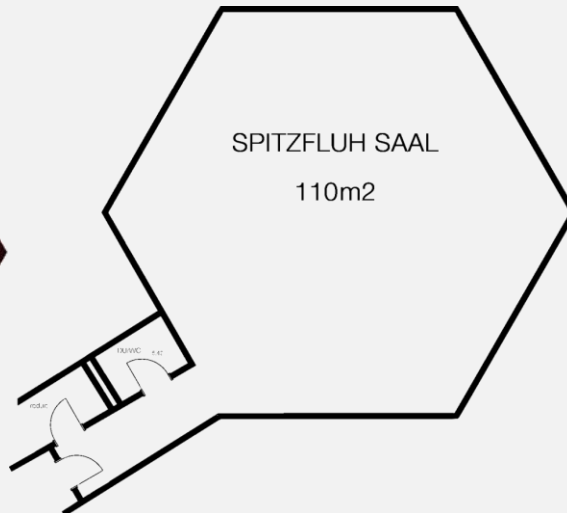
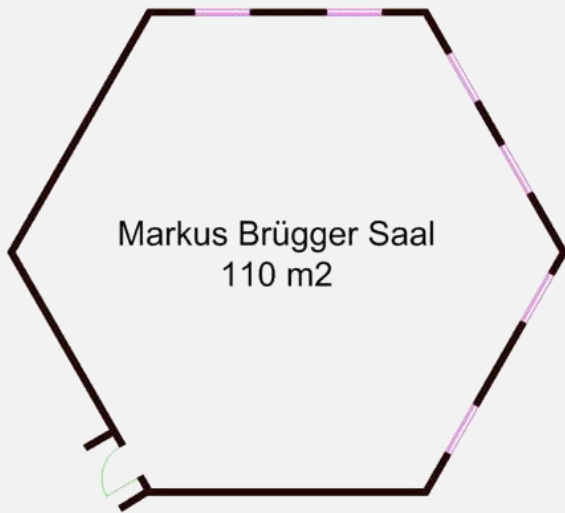
Seating options



	Size m ²	U-form (pers.)	School (pers.)	Cinema (pers.)
Markus-Brügger	110 m ²	40	60	100
Spitzfluh	110 m ²	24	30	40
Riggisalp	78 m ²	30	30	50
Schwyberg	57 m ²	30	30	30
Schopfenspitz	46 m ²	12	-	-



Sketches of our conference rooms



Social program and suggestions for outdoor activities

Nr.	activity	season	time	pers.	costs	CHF
1.	Ice stock	wi	up 1 h	2 – 32	per set and hour	30.00
2.	Sledging & Fondue	wi	3 h	1 – 60	per person	35.00
3.	Snowshoe hike	wi	up 2 h	2 – 50	per person	from 50.00
4.	Night skiing	wi	2 h	1 – 100	per person	20.00
5.	Ice Palace	wi	1.5 h	1 – 70	per person	10.00
6.	Snowfest	wi	1-2 h	20-120	per person	60.00
7.	Intersledge	wi	2-2.5 h	20-120	per person	119.00
8.	Winter Olympics	Wi	1.5-3 h	20-200	per person	65.00
9.	Kitchenparty	wi/su	2 – 3 h	2 – 30	per person	65.00
10.	Making pizza	wi/su	1 h	1 – 20	No costs if seminary package	
11.	Wellness	wi/su	2 h	1 – 20		Including
12.	Paragliding	wi/su	1 h	1 – 20	per person	105.00
13.	Nordic Walking	wi/su	2 h	1 – 30	per person	37.00
14.	Flag Throwing	wi/su	2 h	6 – 24	per 6-12 pers.	580.00
15.	Playing the Alphorn	wi/su	2 h	6 – 24	per 6-12 pers.	580.00
16.	Visiting a local brewery	Wi/su	1 h	6 – 15	per person	from 20.00
17.	Helicopter flight	wi/su	3 h	1 – 72	package	4'400.00
18.	Quad tour	wi/su	2 h	10 – 40	driver	350.00
					passenger	230.00
19.	Banquet Gaming	wi/su	2.5-5 h	30-150	per person	54.00

20.	Flavor Casino	wi/su	1.5 h	12-50	package	1'460.00
21.	Artistic Creation	wi/su	2-3.5 h	12-200	per person	98.00
22.	The Madman Challenge	wi/su	2-4 h	12-200	per person	130.00
23.	Game Building	wi/su	1.5-4 h	6-120	per person	81.00
24.	Hotel Gaming	wi/su	1-2.5 h	10-120	per person	72.00
25.	StrataGame	wi/su	2-3.5 h	18-120	per person	81.00
26.	Cow bell golf	su	1 h	2 – 30	per person	5.00
27.	E-bike tour	su	3 h	2 – 100	per person	from 45.00
28.	Fairy trail	su	2.5-3 h	2-20	package	400.00
29.	The 5 senses	su	2-4 h	2-20	package	350.00
30.	Engineer beaver	su	3 h	2-20	package	450.00
31.	Fishing course	su	2 h	3 – 50	per person	55.00
32.	SUP/kayak/canoe	su	up 1 h	1 – 16	per person	20.00
33.	Monster scooter	su	1 h	1 – 50	per person	20.00
34.	Rope Park Gantrisch	su	3 h	1 – 60	per person	from 32.00
35.	Alpine cheese factory	su	4 h	1 – 30	per person	10.00
36.	Born to be Swiss	su	1.5-3 h	20-200	per person	73.00
37.	Sheep Race	su	1.5-3 h	10-150	per person	83.00
38.	Wild Wild West	su	2-3.5 h	15-120	per person	73.00
39.	Lake Trophy	su	2-3.5 h	8-60	per person	125.00

Amendments mav occur!